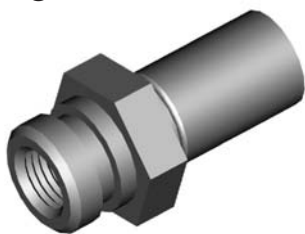


# IMPERIAL FEMALE FITTINGS

## HFIF01



THREAD	SEAT	MOUNT	HEX	OAL	FITS
3/8"NF	Inverted	Clip	19mm	38mm	V

## HFIF01B



Brass

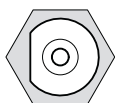
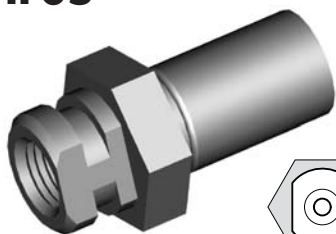
THREAD	SEAT	MOUNT	HEX	OAL	FITS
3/8"NF	Inverted	Clip	17mm	38mm	V

## HFIF02



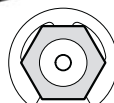
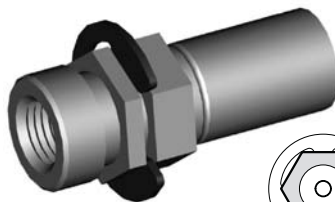
THREAD	SEAT	MOUNT	HEX	OAL	FITS
7/16"NS	Inverted	Clip	19mm	38mm	V

## HFIF05



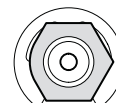
THREAD	SEAT	MOUNT	HEX	OAL	FITS
3/8"NF	Inverted	Clip	19mm	38mm	V

## HFIF07



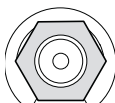
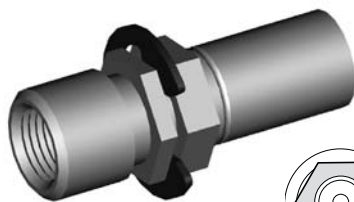
THREAD	SEAT	MOUNT	HEX	OAL	FITS
3/8"NF	Inverted	Clip	16mm	41mm	US

## HFIF08



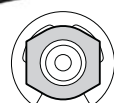
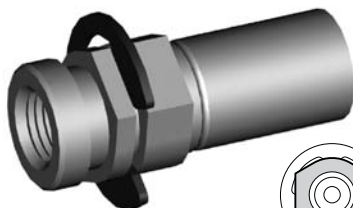
THREAD	SEAT	MOUNT	HEX	OAL	FITS
3/8"NF	Inverted	Clip	16mm	41mm	US

## HFIF09



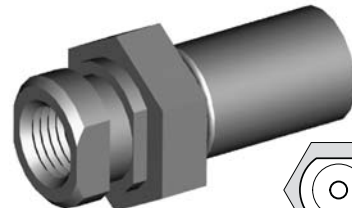
THREAD	SEAT	MOUNT	HEX	OAL	FITS
7/16"NS	Inverted	Clip	16mm	45mm	US

## HFIF10



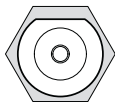
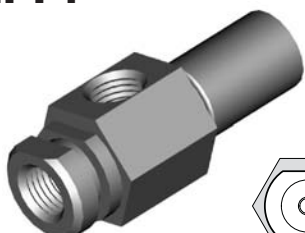
THREAD	SEAT	MOUNT	HEX	OAL	FITS
3/8"NF	Inverted	Clip	16mm	39mm	US

## HFIF11



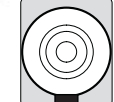
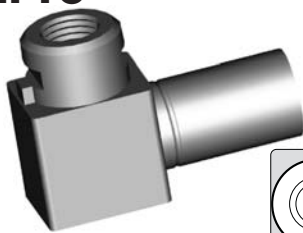
THREAD	SEAT	MOUNT	HEX	OAL	FITS
3/8"NF	Inverted	Clip	19mm	38mm	V

## HFIF14



THREAD	SEAT	MOUNT	HEX	OAL	FITS
3/8"NF x2	Inverted	Clip	19mm	50mm	US

## HFIF18



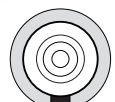
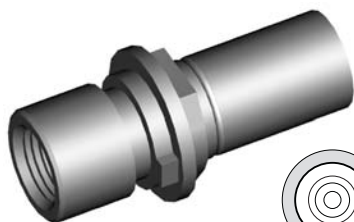
THREAD	SEAT	MOUNT	HEX	OAL	FITS
3/8"NF	Inverted	Clip	-	41mm	US

## HFIF19



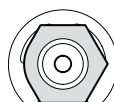
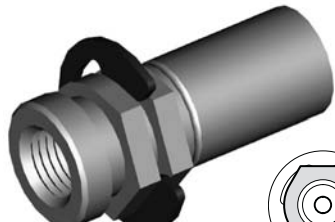
THREAD	SEAT	MOUNT	HEX	OAL	FITS
3/8"NF	Inverted	Clip	16mm	38mm	US

## HFIF20



THREAD	SEAT	MOUNT	HEX	OAL	FITS
7/16"NS	Inverted	Clip	16mm	44mm	US

## HFIF21



THREAD	SEAT	MOUNT	HEX	OAL	FITS
3/8"NF	DPS	Clip	16mm	37mm	US

## HFIF24



THREAD	SEAT	MOUNT	HEX	OAL	FITS
7/16"NS	Inverted	Clip	16mm	40mm	US

CLIP MOUNT

A = Asian

EU = European

US = United States

UNI = Universal

V = Various

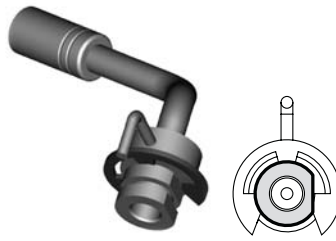
# IMPERIAL FEMALE FITTINGS

## HFIF26



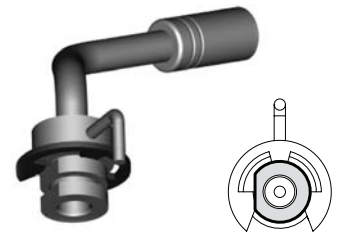
THREAD	SEAT	MOUNT	HEX	OAL	FITS
3/8"NF	Inverted	Clip	16mm	40mm	US

## HFIF29



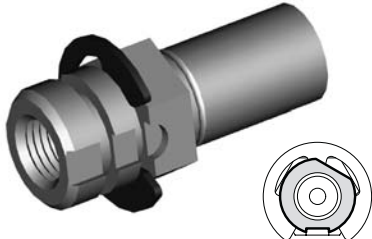
THREAD	SEAT	MOUNT	HEX	OAL	FITS
3/8"NF	Inverted	Clip	-	78mm	US

## HFIF30



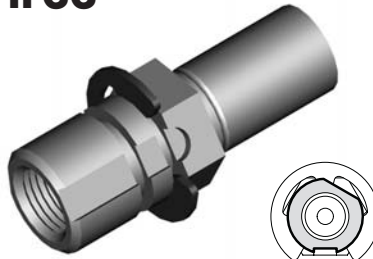
THREAD	SEAT	MOUNT	HEX	OAL	FITS
3/8"NF	Inverted	Clip	-	78mm	US

## HFIF32



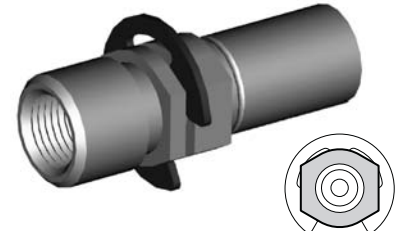
THREAD	SEAT	MOUNT	HEX	OAL	FITS
3/8"NF	Inverted	Clip	17mm	41mm	US

## HFIF33



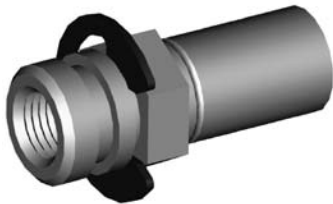
THREAD	SEAT	MOUNT	HEX	OAL	FITS
7/16"NS	Inverted	Clip	17mm	41mm	US

## HFIF35



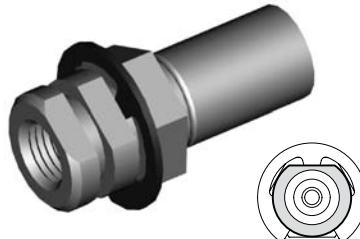
THREAD	SEAT	MOUNT	HEX	OAL	FITS
7/16"NS	Inverted	Clip	16mm	46mm	US

## HFIF36



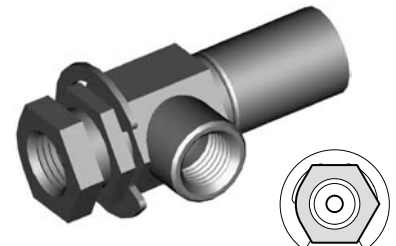
THREAD	SEAT	MOUNT	HEX	OAL	FITS
3/8"NF	Inverted	Clip	16mm	39mm	US

## HFIF38



THREAD	SEAT	MOUNT	HEX	OAL	FITS
3/8"NF	Inverted	Clip	17mm	40mm	US

## HFIF40



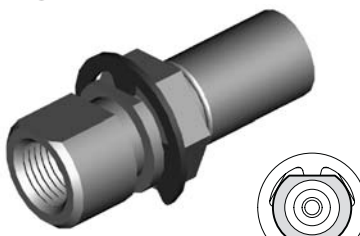
THREAD	SEAT	MOUNT	HEX	OAL	FITS
3/8"NF x 2	Inverted	Clip	16mm	48mm	US

## HFIF45



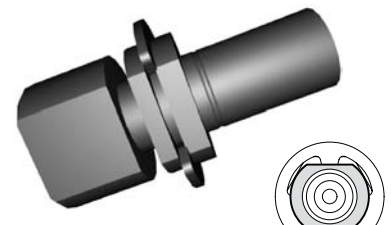
THREAD	SEAT	MOUNT	HEX	OAL	FITS
3/8"NF	Inverted	Clip	16mm	39mm	US

## HFIF51



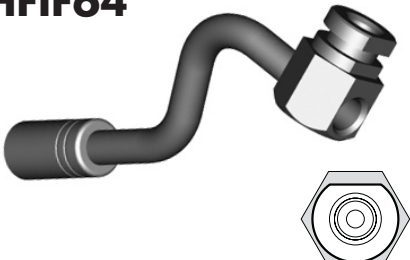
THREAD	SEAT	MOUNT	HEX	OAL	FITS
7/16"NS	Inverted	Clip	17mm	46mm	US

## HFIF63



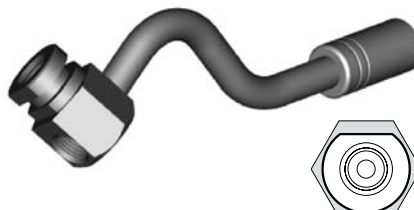
THREAD	SEAT	MOUNT	HEX	OAL	FITS
1/2"NF	Inverted	Clip	-	47mm	US

## HFIF64



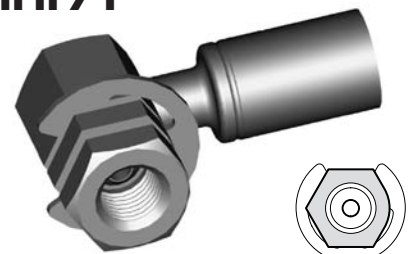
THREAD	SEAT	MOUNT	HEX	OAL	FITS
3/8"NF x 2	Inverted	Clip	19mm	137mm	US

## HFIF65



THREAD	SEAT	MOUNT	HEX	OAL	FITS
3/8"NF x 2	Inverted	Clip	19mm	137mm	US

## HFIF71



THREAD	SEAT	MOUNT	HEX	OAL	FITS
3/8"NF	Inverted	Clip	16mm	45mm	US

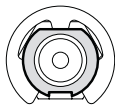
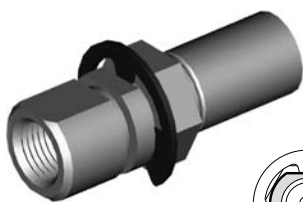
CLIP MOUNT

A = Asian    EU = European    US = United States    UNI = Universal    V = Various

# IMPERIAL FEMALE FITTINGS

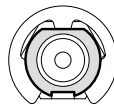
CLIP MOUNT

## HFIF72



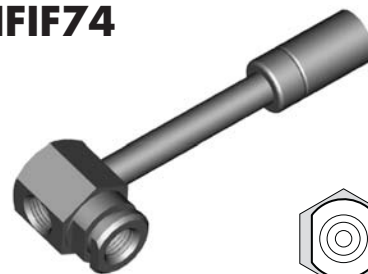
THREAD	SEAT	MOUNT	HEX	OAL	FITS
3/8"NF	Inverted	Clip	17mm	47mm	US

## HFIF73



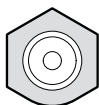
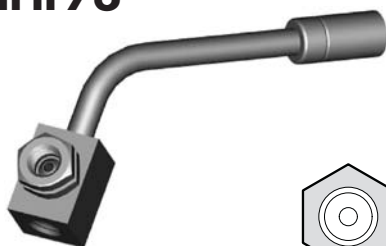
THREAD	SEAT	MOUNT	HEX	OAL	FITS
7/16"NS	Inverted	Clip	17mm	47mm	US

## HFIF74



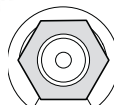
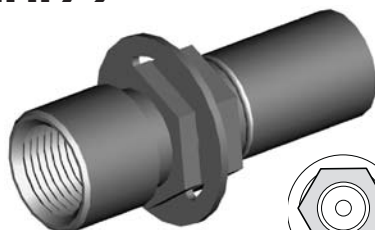
THREAD	SEAT	MOUNT	HEX	OAL	FITS
3/8"NF x 2	Inverted	Clip	19mm	92mm	US

## HFIF76



THREAD	SEAT	MOUNT	HEX	OAL	FITS
3/8"NF x 2	Inverted	Clip	16mm	90mm	US

## HFIF79



THREAD	SEAT	MOUNT	HEX	OAL	FITS
1/2"NF	Inverted	Clip	16mm	45mm	US

## HFIF82



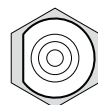
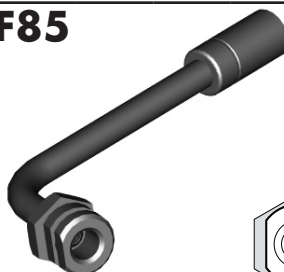
THREAD	SEAT	MOUNT	HEX	OAL	FITS
3/8"NF	Inverted	Clip	-	40mm	US

## HFIF83



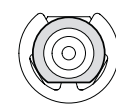
THREAD	SEAT	MOUNT	HEX	OAL	FITS
3/8"NF	Inverted	Clip	16mm	55mm	US

## HFIF85



THREAD	SEAT	MOUNT	HEX	OAL	FITS
3/8"NF	Inverted	Clip	17.5mm	-	US

## HFIF87



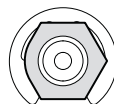
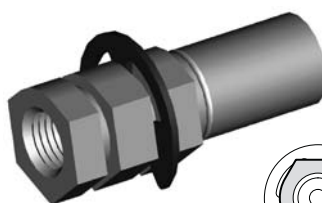
THREAD	SEAT	MOUNT	HEX	OAL	FITS
3/8"NF x 2	Inverted	Clip	17.5mm	50mm	US

## HFIF107



THREAD	SEAT	MOUNT	HEX	OAL	FITS
3/8"NF x 2	Inverted	Clip	19mm	57mm	US

## HFIF301



THREAD	SEAT	MOUNT	HEX	OAL	FITS
3/8"NF	Inverted	Clip	16mm	43mm	US

A = Asian

EU = European

US = United States

UNI = Universal

V = Various

# IMPERIAL FEMALE FITTINGS

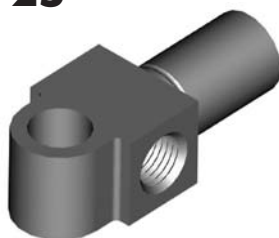
## HFIF23



12mm Hole

THREAD	SEAT	MOUNT	HOLE	OAL	FITS
3/8"NF x 2	Inverted	Bolted	12mm	65mm	US

## HFIF25



10mm Hole

THREAD	SEAT	MOUNT	HOLE	OAL	FITS
3/8"NF x 2	Inverted	Bolted	10mm	49mm	US

## HFIF27



11.8mm Hole

THREAD	SEAT	MOUNT	HOLE	OAL	FITS
3/8"NF x 2	Inverted	Bolted	11.8mm	70mm	US

## HFIF28



11.8mm Hole

THREAD	SEAT	MOUNT	HOLE	OAL	FITS
3/8"NF-7/16"NS	Inverted	Bolted	11.8mm	52mm	US

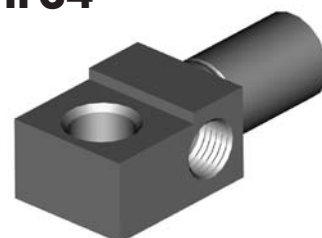
## HFIF31



12mm Hole

THREAD	SEAT	MOUNT	HOLE	OAL	FITS
3/8"NF-7/16"NS	Inverted	Bolted	12mm	52mm	US

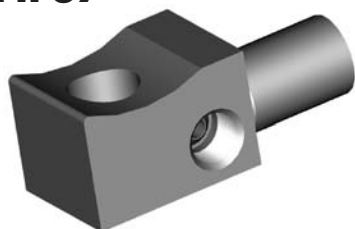
## HFIF34



8/10mm Hole

THREAD	SEAT	MOUNT	HOLE	OAL	FITS
3/8"NF x 2	Inverted	Bolted	8/10mm	49mm	US

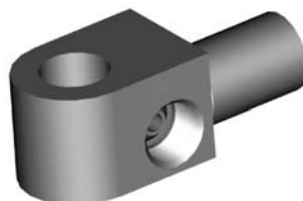
## HFIF37



12mm Hole

THREAD	SEAT	MOUNT	HOLE	OAL	FITS
3/8"NF x 2	Inverted	Bolted	12mm	53mm	US

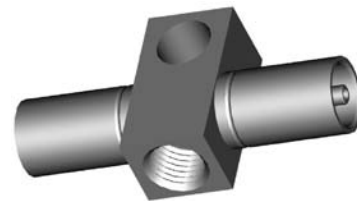
## HFIF39



11.8mm Hole

THREAD	SEAT	MOUNT	HOLE	OAL	FITS
3/8"NF-7/16"NS	Inverted	Bolted	11.8mm	52mm	US

## HFIF46



10mm Hole

THREAD	SEAT	MOUNT	HOLE	OAL	FITS
7/16"NS	Inverted	Bolted	10mm	60mm	US

## HFIF47



12mm Hole

THREAD	SEAT	MOUNT	HOLE	OAL	FITS
3/8"NF x 2	Inverted	Bolted	12mm	50mm	US

## HFIF48



11.5mm Hole

THREAD	SEAT	MOUNT	HOLE	OAL	FITS
3/8"NF-7/16"NS	Inverted	Bolted	11.5mm	53mm	US

## HFIF53



11.8mm Hole

THREAD	SEAT	MOUNT	HOLE	OAL	FITS
3/8"NF x 2	Inverted	Bolted	11.8mm	53mm	US

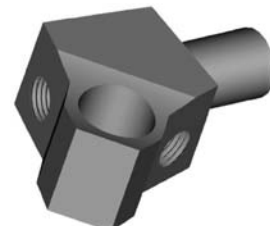
## HFIF54



12mm Hole

THREAD	SEAT	MOUNT	HOLE	OAL	FITS
7/16"NS	Inverted	Bolted	12mm	51mm	US

## HFIF55



15mm Hole

THREAD	SEAT	MOUNT	HOLE	OAL	FITS
3/8"NF x 2	Inverted	Bolted	15mm	58mm	US

## HFIF56



11.8mm Hole

THREAD	SEAT	MOUNT	HOLE	OAL	FITS
3/8"NF x 2	Inverted	Bolted	11.8mm	55mm	US

BOLT ON MOUNT

A = Asian

EU = European

US = United States

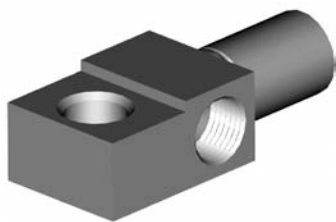
UNI = Universal

V = Various

# IMPERIAL FEMALE FITTINGS

BOLT ON MOUNT

## HFIF57



8/10mm Hole

THREAD	SEAT	MOUNT	HOLE	OAL	FITS
7/16"NS x 2	Inverted	Bolted	8/10mm	54mm	US

## HFIF58



11.5mm Hole

THREAD	SEAT	MOUNT	HOLE	OAL	FITS
3/8"NF x 2	Inverted	Bolted	11.5mm	50mm	US

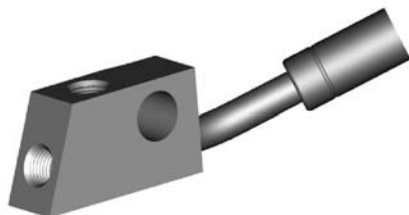
## HFIF59



12mm Hole

THREAD	SEAT	MOUNT	HOLE	OAL	FITS
3/8"NF x 2	Inverted	Bolted	12mm	100mm	US

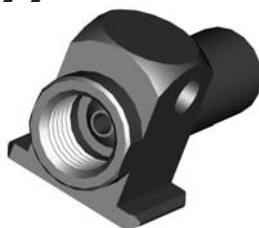
## HFIF66



12mm Hole

THREAD	SEAT	MOUNT	HOLE	OAL	FITS
3/8"NF x 2	Inverted	Bolted	12mm	93mm	US

## HFIF77



THREAD	SEAT	MOUNT	HOLE	OAL	FITS
1/2"NF	Inverted	Bolted	6mm	42mm	US

## HFIF80



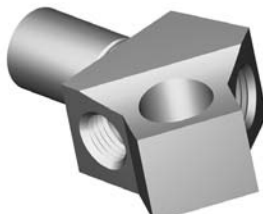
THREAD	SEAT	MOUNT	HOLE	OAL	FITS
3/8"NF x 2	Inverted	Bolted	11.8mm	52mm	US

## HFIF88



THREAD	SEAT	MOUNT	HOLE	OAL	FITS
3/8"NF	Inverted	Bolted	11.6mm	51mm	US

## HFIF110



THREAD	SEAT	MOUNT	HOLE	OAL	FITS
3/8"NF x 2	Inverted	Bolted	12mm	-	US

## HFIF115



THREAD	SEAT	MOUNT	HOLE	OAL	FITS
7/16"NS x 2	Inverted	Bolted	12mm	57mm	US

## HFIF303

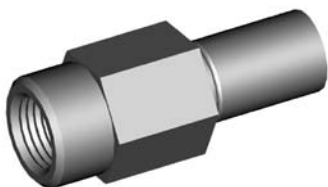


11.4mm Hole

THREAD	SEAT	MOUNT	HOLE	OAL	FITS
3/8"NF-7/16"NS	Inverted	Bolted	7/16"	70mm	US

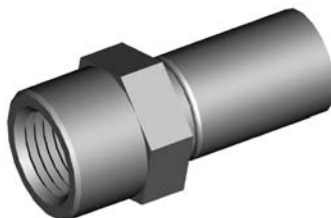
NO MOUNT

## HFIF03



THREAD	SEAT	MOUNT	HEX	OAL	FITS
1/2"NF	DPS	-	19mm	50mm	US

## HFIF06



THREAD	SEAT	MOUNT	HEX	OAL	FITS
1/2"NF	Inverted	-	17mm	38mm	UNI

A = Asian

EU = European

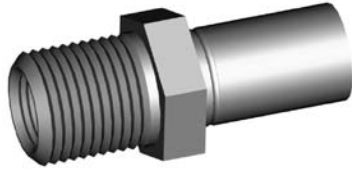
US = United States

UNI = Universal

V = Various

# IMPERIAL FEMALE FITTINGS

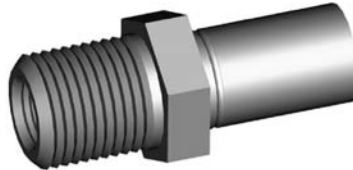
## HFIFX01



5/8NF External Thread

THREAD	SEAT	MOUNT	HEX	OAL	FITS
7/16"NS	Inverted	Bulkhead	19mm	45mm	V

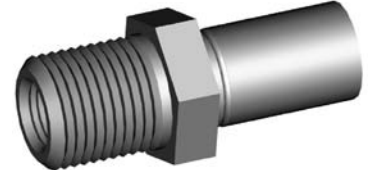
## HFIFX02



5/8NF External Thread

THREAD	SEAT	MOUNT	HEX	OAL	FITS
3/8"NF	Inverted	Bulkhead	19mm	45mm	V

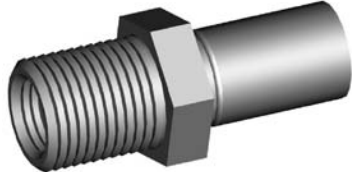
## HFIFX03



5/8NF External Thread

THREAD	SEAT	MOUNT	HEX	OAL	FITS
3/8"BSF	Inverted	Bulkhead	19mm	45mm	V

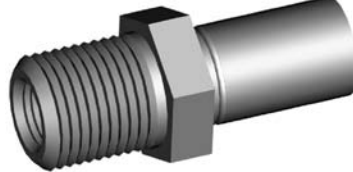
## HFIFX04



5/8NF External Thread

THREAD	SEAT	MOUNT	HEX	OAL	FITS
7/16"NF	Inverted	Bulkhead	19mm	45mm	V

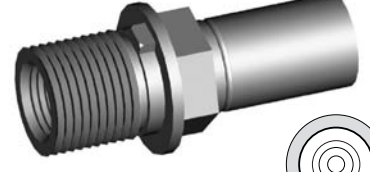
## HFIFX05



5/8NF External Thread

THREAD	SEAT	MOUNT	HEX	OAL	FITS
3/8"NF	DPS	Bulkhead	19mm	45mm	V

## HFIFX06

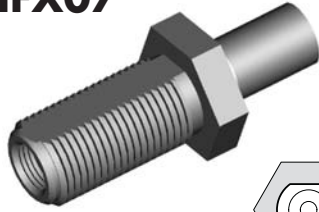


5/8NF External Thread

THREAD	SEAT	MOUNT	HEX	OAL	FITS
7/16"NS	Inverted	Bulkhead	16mm	46mm	US

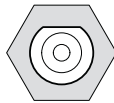


## HFIFX07

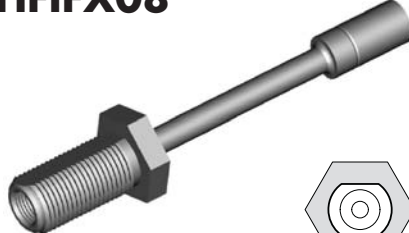


3/4NF External Thread

THREAD	SEAT	MOUNT	HEX	OAL	FITS
7/16"NS	Inverted	Bulkhead	25mm	65mm	US

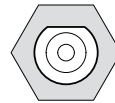


## HFIFX08

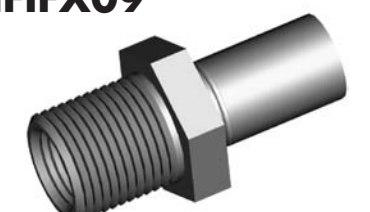


3/4NF External Thread

THREAD	SEAT	MOUNT	HEX	OAL	FITS
7/16"NS	Inverted	Bulkhead	25mm	135mm	US



## HFIFX09



11/16NS External Thread

THREAD	SEAT	MOUNT	HEX	OAL	FITS
1/2"NF	Inverted	Bulkhead	22mm	46mm	US

## HFIFX10



5/8NF External Thread

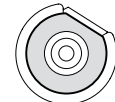
THREAD	SEAT	MOUNT	HEX	OAL	FITS
3/8"NF	Inverted	Bulkhead	22mm	117mm	US

## HFIFX11



5/8NF External Thread

THREAD	SEAT	MOUNT	HEX	OAL	FITS
3/8"NF	Inverted	Bulkhead	19mm	48mm	US



## HFIFX12



5/8NF External Thread

THREAD	SEAT	MOUNT	HEX	OAL	FITS
7/16"NS	Inverted	Bulkhead	22mm	54mm	US



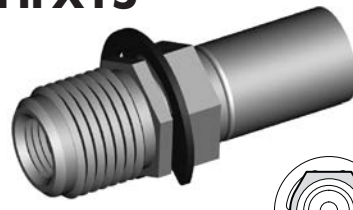
## HFIFX14



3/4NF External Thread

THREAD	SEAT	MOUNT	HEX	OAL	FITS
3/8"NF	Inverted	Bulkhead	22mm	45mm	US

## HFIFX15



5/8NF External Thread

THREAD	SEAT	MOUNT	HEX	OAL	FITS
3/8"NF	Inverted	Bulkhead	16mm	47mm	US



## HFIFX16



3/4NF External Thread

THREAD	SEAT	MOUNT	HEX	OAL	FITS
7/16"NS	Inverted	Bulkhead	22mm	45mm	US

BULKHEAD MOUNT

A = Asian

EU = European

US = United States

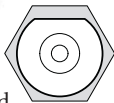
UNI = Universal

V = Various

# IMPERIAL FEMALE FITTINGS

BULKHEAD MOUNT

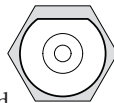
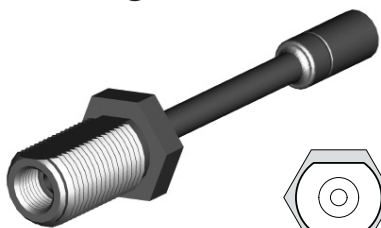
## HFIFX17



7/8NF External Thread

THREAD	SEAT	MOUNT	HEX	OAL	FITS
1/2"NF	Inverted	Bulkhead	27mm	65mm	US

## HFIFX18



7/8NF External Thread

THREAD	SEAT	MOUNT	HEX	OAL	FITS
1/2"NF	Inverted	Bulkhead	27mm	135mm	US

## HFIFX20

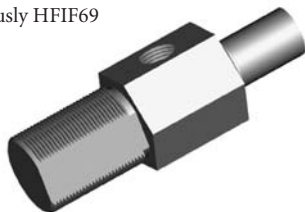


5/8NF External Thread

THREAD	SEAT	MOUNT	HEX	OAL	FITS
1/8"NPT	-	Bulkhead	19mm	45mm	US

## HFIFX21

Previously HFIF69

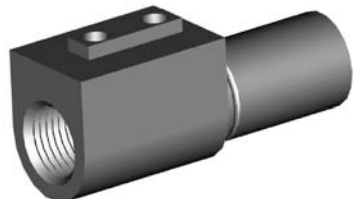


7/8" x 18NS External Thread

THREAD	SEAT	MOUNT	HEX	OAL	FITS
7/16"NS x 2	Inverted	Bulkhead	25mm	80mm	US

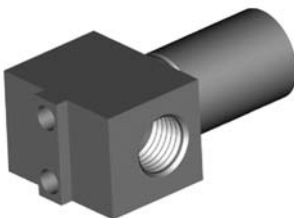
BRACKET MOUNT

## HFIF15



THREAD	SEAT	MOUNT	HEX	OAL	FITS
3/8"NF	Inverted	Bracket	-	46mm	US

## HFIF22



THREAD	SEAT	MOUNT	HEX	OAL	FITS
3/8"NF x 2	Inverted	Bracket	-	41mm	US

## HFIF41



THREAD	SEAT	MOUNT	HEX	OAL	FITS
3/8"NF	Inverted	Bracket	-	50mm	US

## HFIF42



THREAD	SEAT	MOUNT	HEX	OAL	FITS
3/8"NF	Inverted	Bracket	-	50mm	US

## HFIF44



THREAD	SEAT	MOUNT	HEX	OAL	FITS
3/8"NF x 2	Inverted	Bracket	-	50mm	US

## HFIF52



THREAD	SEAT	MOUNT	HEX	OAL	FITS
7/16"NS	Inverted	Bracket	-	46mm	US

## HFIF60



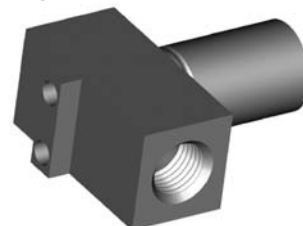
THREAD	SEAT	MOUNT	HEX	OAL	FITS
3/8"NF x 2	Inverted	Bracket	-	102mm	US

## HFIF70



THREAD	SEAT	MOUNT	HEX	OAL	FITS
3/8"NF x 2	Inverted	Bracket	-	48mm	US

## HFIF81



THREAD	SEAT	MOUNT	HEX	OAL	FITS
3/8"NF	Inverted	Bracket	-	38mm	US

A = Asian

EU = European

US = United States

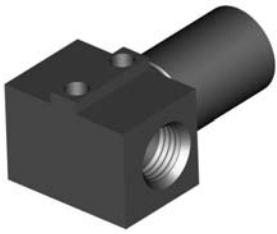
UNI = Universal

V = Various

# IMPERIAL FEMALE FITTINGS

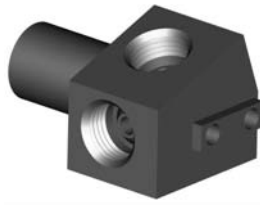
BRACKET MOUNT

## HFIF90



THREAD	SEAT	MOUNT	HEX	OAL	FITS
3/8"NF x 2	Inverted	Bracket	-	37mm	US

## HFIF109



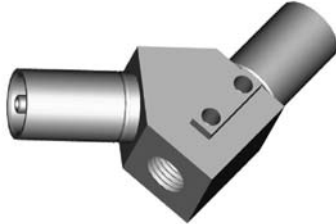
THREAD	SEAT	MOUNT	HEX	OAL	FITS
7/16"NS x 2	Inverted	Bracket	-	46mm	US

## HFIF304



THREAD	SEAT	MOUNT	HEX	OAL	FITS
3/8"NF x 2	Inverted	Bracket	-	51mm	US

## HFIF306



THREAD	SEAT	MOUNT	HEX	OAL	FITS
3/8"NF	Inverted	Bracket	-	58mm	US

## BQ71



### Bracket Retaining Screws (PKT 50)

This thread forming screw is required to secure bracket to bracket mount fittings.